



# Quarterly Data Report

First Quarter 2017

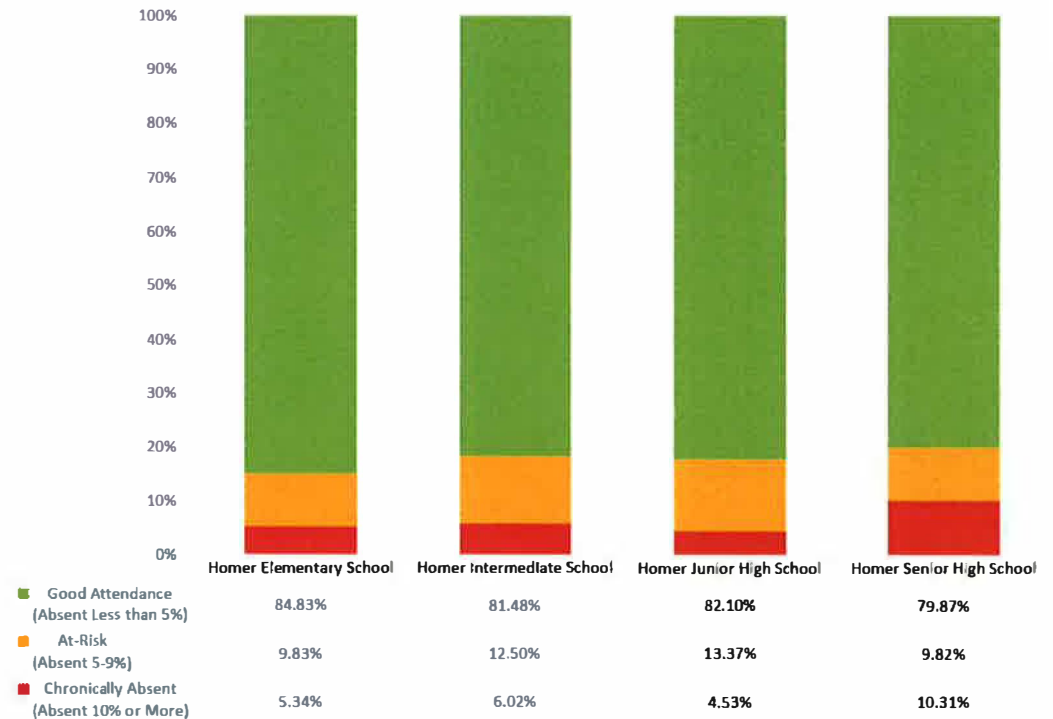
# Absenteeism

Brought in line with  
NYSED reporting

Chronically Absent = 10%  
or more

At-risk of being chronically  
absent = 5%-9%

17-18 Q1 Attendance - By School

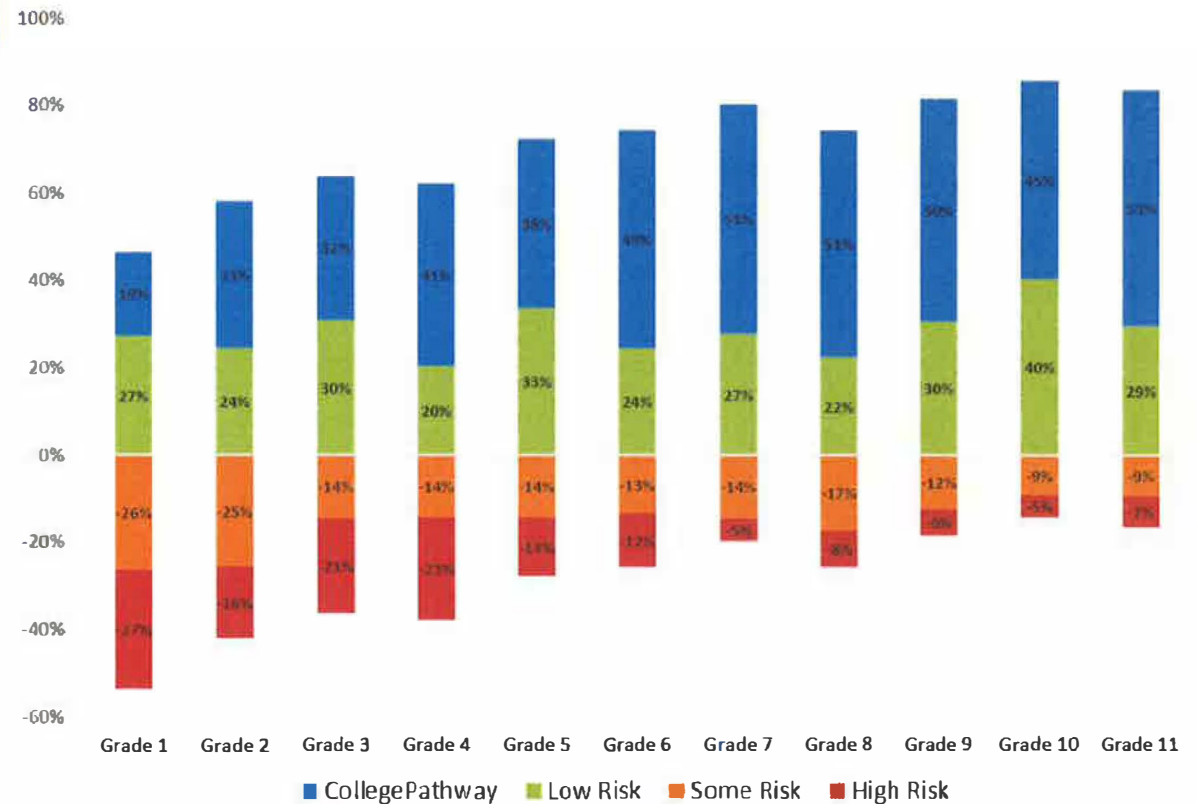


# Fast Bridge Data

One measure for helping school data teams identify opportunities for academic interventions

New format - floating stacked bar chart

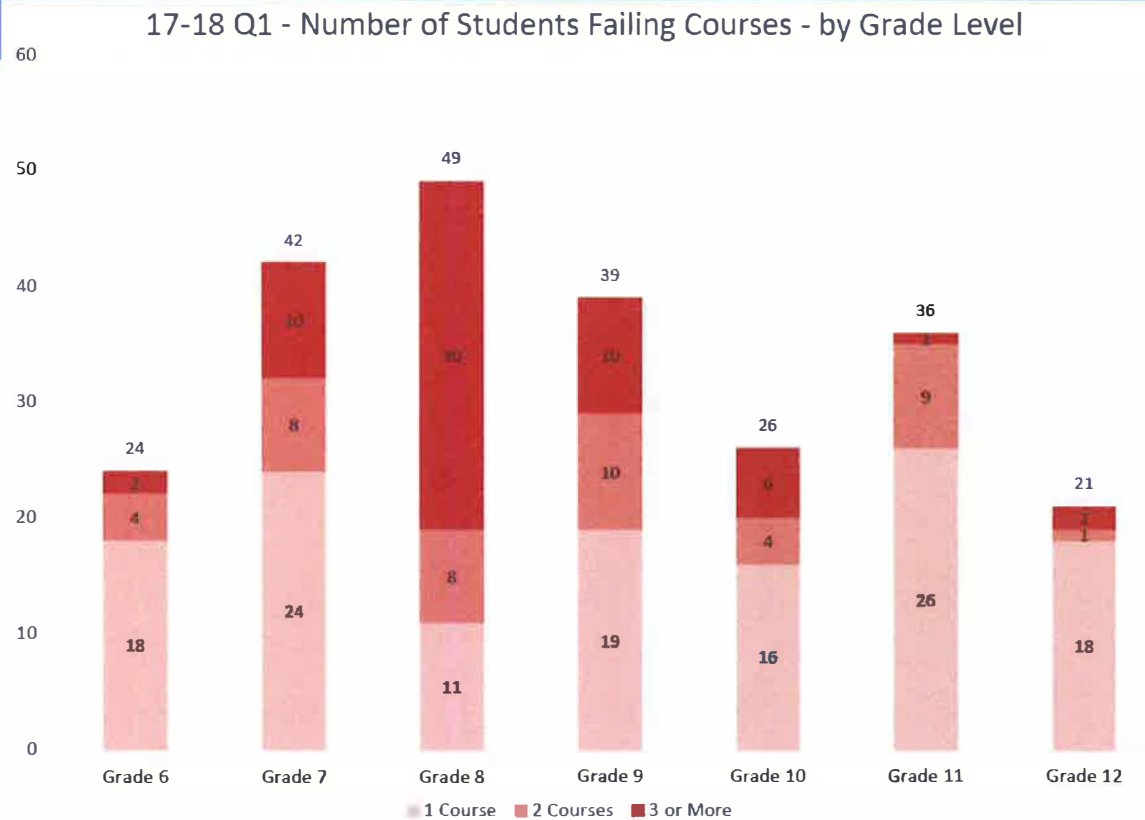
Fall 2017 - aReading - Grades 1-11



# Course Performance

Course Failures  
Course Mastery  
(count of students)

Mastery 85-100  
Passing 65-84  
Failing 0-64



# 3-8 NYS Testing

## 2017 NYS 3-8 Assessment Results Compared to BOCES

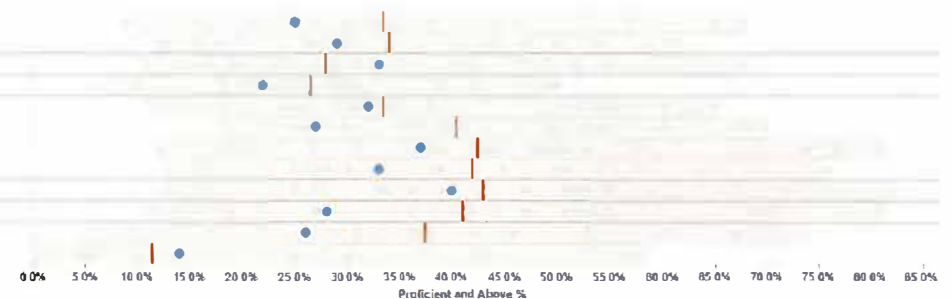
New data system for reporting Forecast 5

Blue dot is Homer CSD  
 Red line is the average  
 Gray bar is the range

Test Name  
 NYSE/IT  
 Test Area  
 ELA  
 Math

Grade Level	Year
3	2017
4	2017
5	2017
6	2017
7	2017
8	2017
3	2017
4	2017
5	2017
6	2017
7	2017
8	2017

NYSE/IT & Regents Exam Results Comparison - District  
 Test Area: All  
 Breakdown Category and Type: All Students - All Students  
 Source: New York State Report Cards



- The grey bar outlines the lowest performing district to the highest performing district for each test/grade level
- The brown line indicates the median for each test/grade level
- The dark blue dot highlights your district compared to your peer group

# Accountability

## ESEA - Elementary and Secondary Education Act

- 2002-2015: No Child Left Behind (NCLB)
  - Schools that did not meet AYP for two years in a row were identified “in need of improvement”
- 2015 - current: Every Student Succeeds Act (ESSA)
  - States are given authority over accountability - through application with USDOE identifying goals and standards and how they plan to achieve them



# Every Student Succeeds Act (ESSA)

New York sent an application to USDOE in September, 2017 (under review still)

NY proposed that schools will be measured annually on these indicators:

- ELA, Math, Science, ENL, Chronic Absenteeism
- HS Social Studies; Graduation rate; College, career and civic readiness index
- Future: Out-of-school suspensions (beginning with 2018-19), and being ready for high school

# NY Accountability Under ESSA

- Comprehensive Support and Improvement (CSI):
  - Schools in the bottom 5% of all schools
  - High schools with 4-, 5-, and 6- year graduation rates of 67% or less
  - Schools that have not improved after receiving targeted support
- Targeted Support and Improvement:
  - Schools with subgroups that are among the lowest-performing in the state