

Homer Data Report

Fall

2016 - 2017



Table of Contents

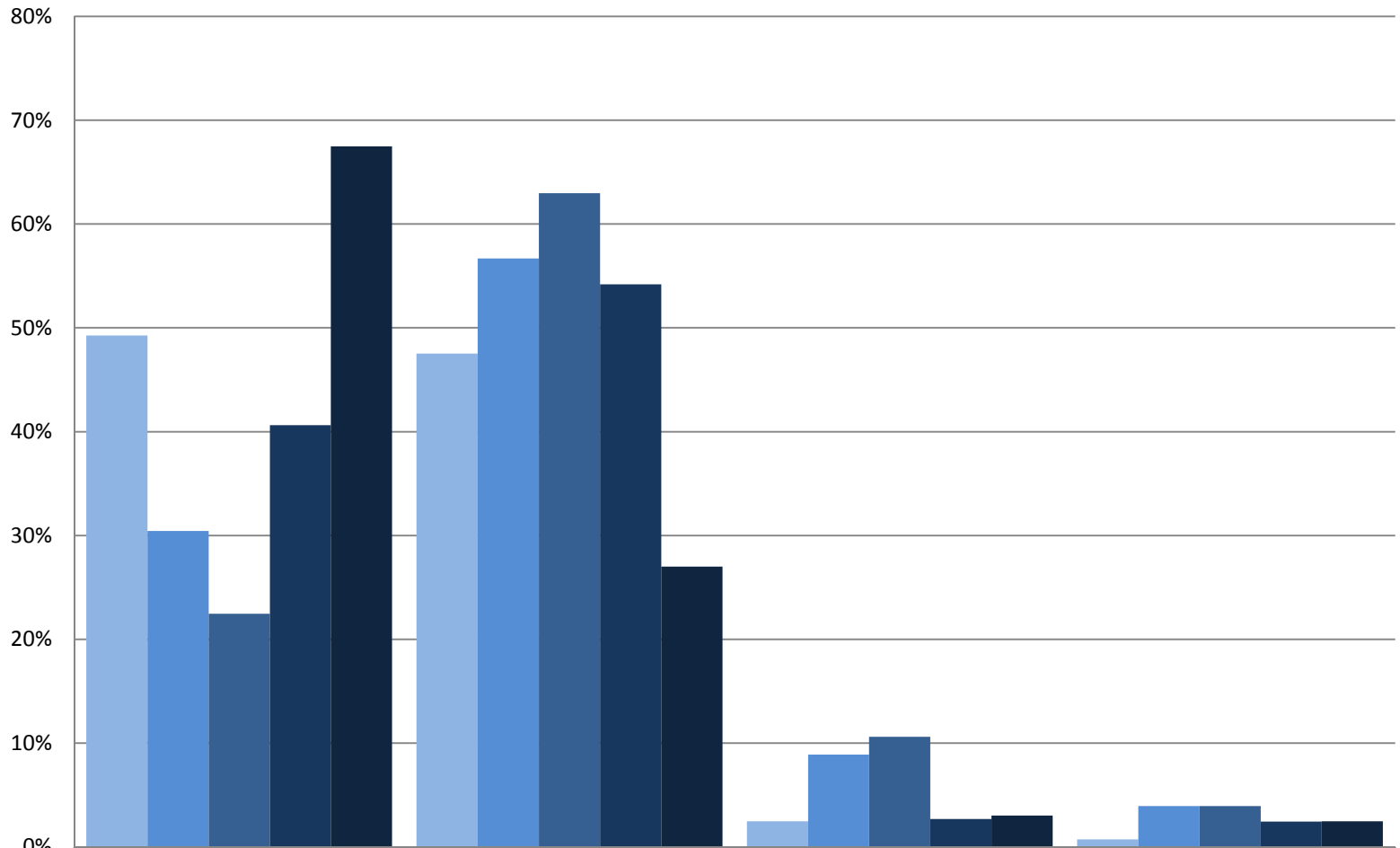
Attendance

- Individual Buildings3
- All Buildings
 - Fall 16-177
 - Students with <85% Attendance.....8

Assessments

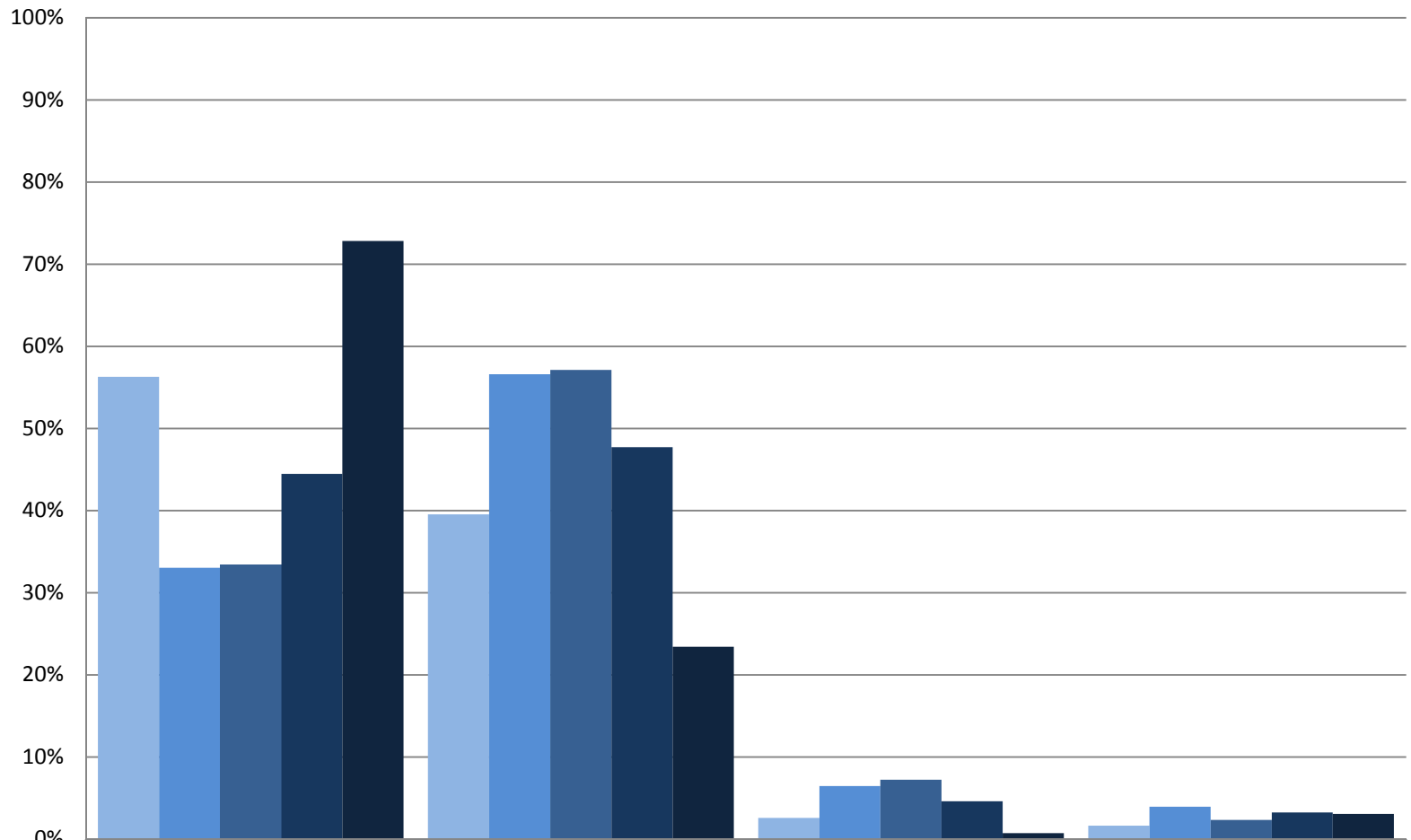
- Writing Prompt
 - Elementary Gr. 1-29
 - Intermediate Gr. 3-510
- FastBridge Universal Screening Gr. K-8.....11

Elementary School - Student % Total Attendance - last 5 reporting periods



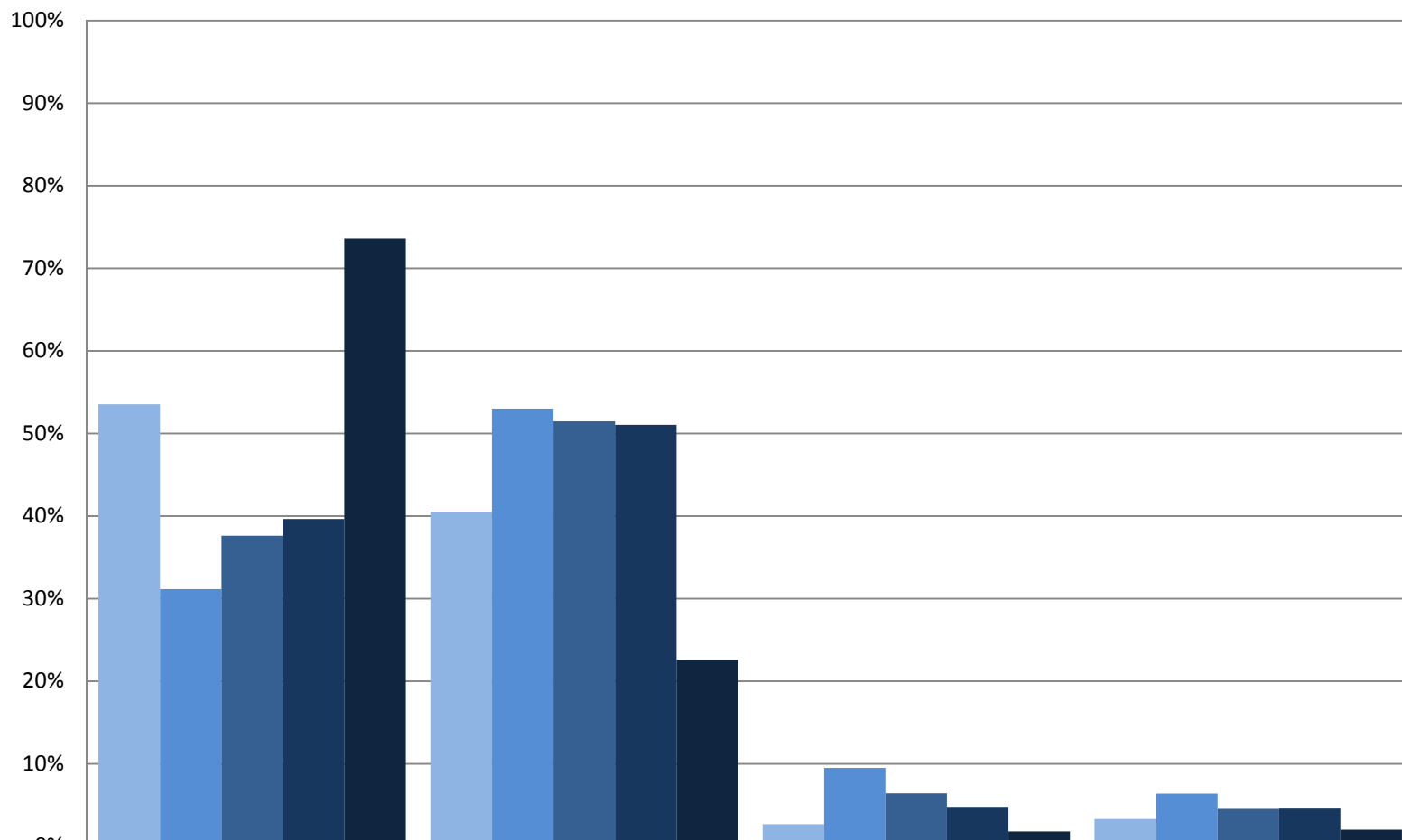
	Perfect Attendance	90%-99%	85% to <90%	<85%
15-16 Q1 (9/3-11/6)	49%	48%	2%	1%
15-16 Q2 (11/7-1/29)	30%	57%	9%	4%
15-16 Q3 (1/30-4/8)	22%	63%	11%	4%
15-16 Q4 (4/9-6/23)	41%	54%	3%	2%
16-17 FALL (9/6-10/7)	67%	27%	3%	2%

Intermediate School - Student % Total Attendance - last 5 reporting periods



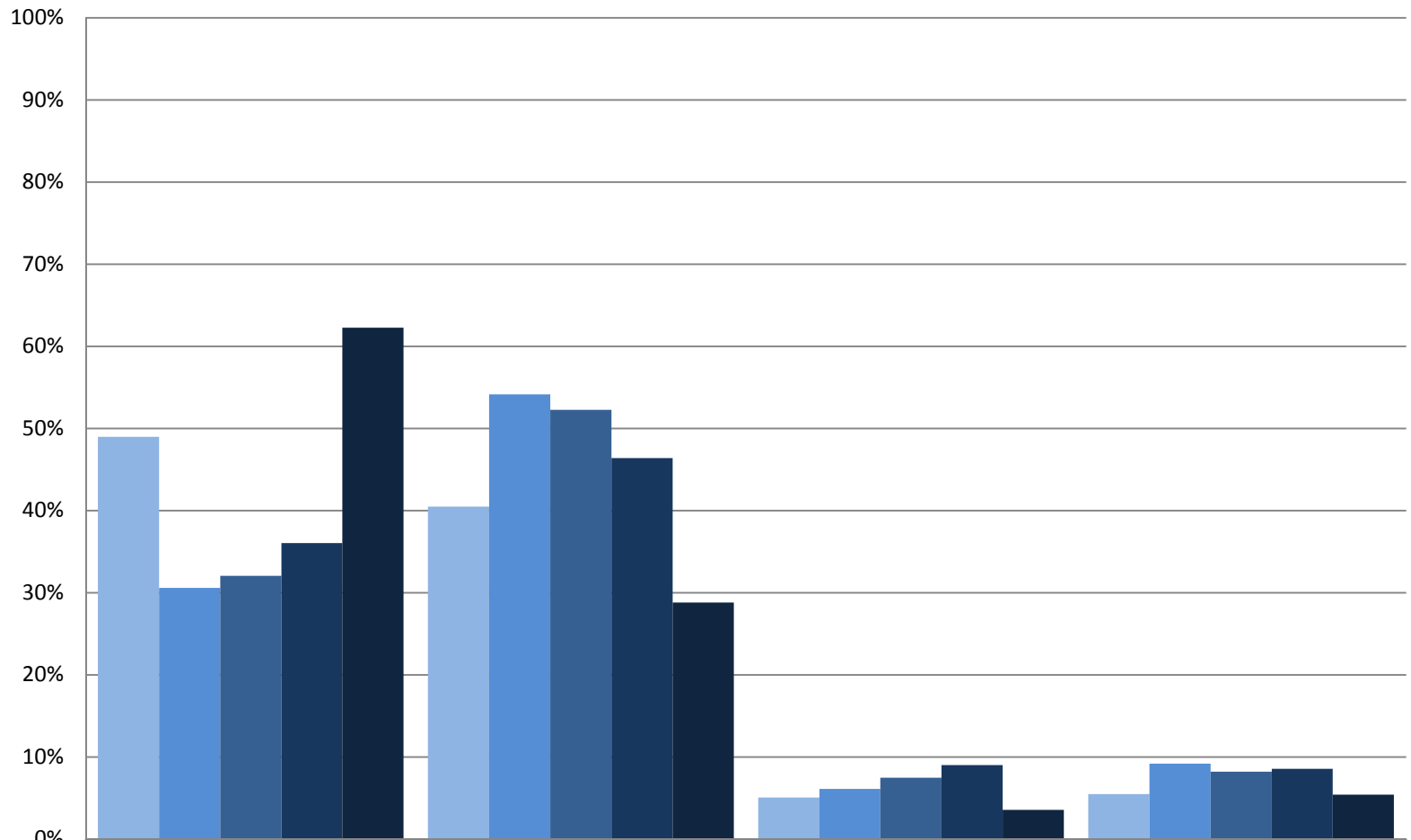
	Perfect Attendance	90%-99%	85% to <90%	<85%
■ 15-16 Q1 (9/3-11/6)	56%	40%	3%	2%
■ 15-16 Q2 (11/7-1/29)	33%	57%	6%	4%
■ 15-16 Q3 (1/30-4/8)	33%	57%	7%	2%
■ 15-16 Q4 (4/9-6/23)	44%	48%	5%	3%
■ 16-17 FALL (9/6-10/7)	73%	23%	1%	3%

Junior High School - Student % Total Attendance - last 5 reporting periods



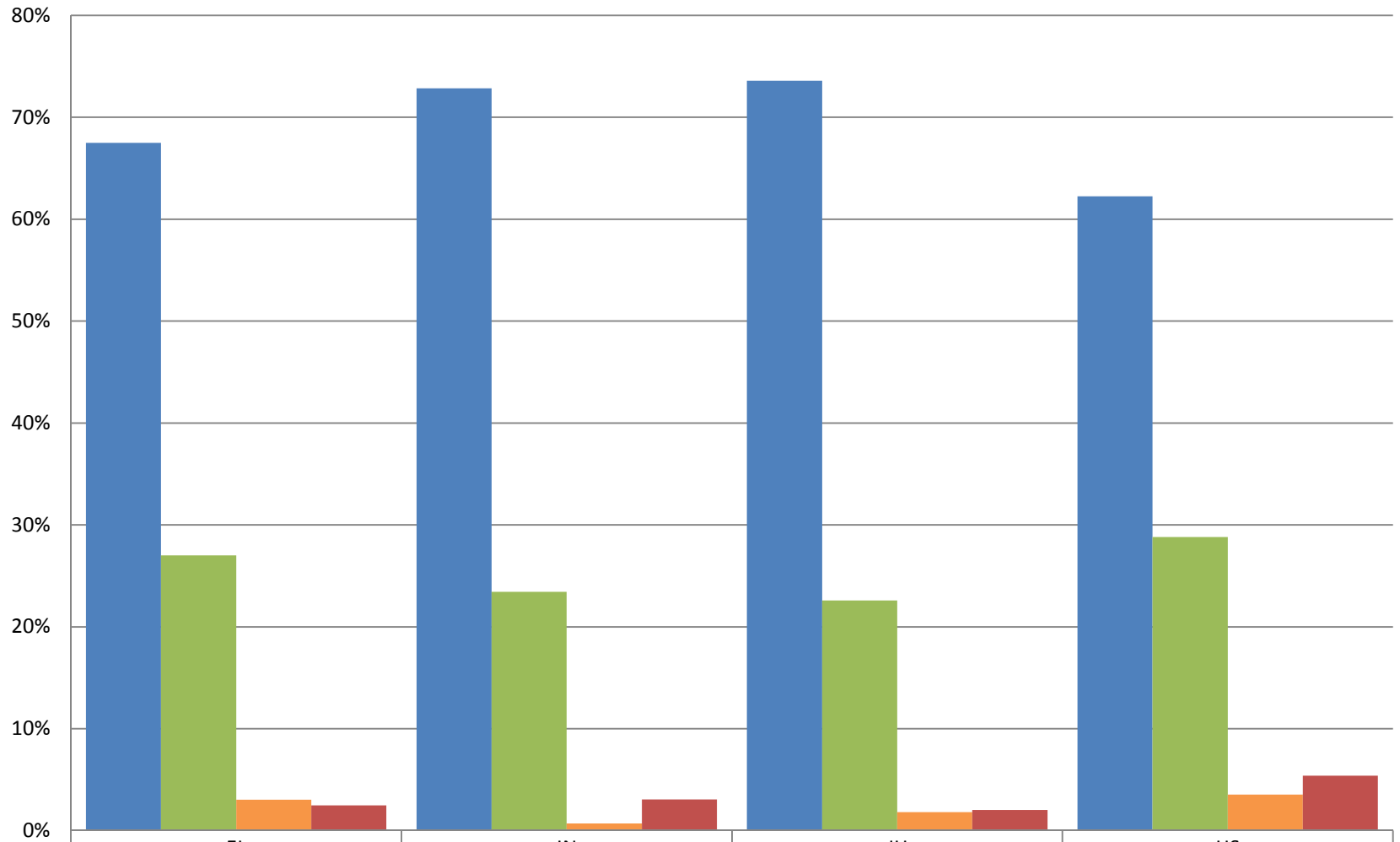
	Perfect Attendance	90%-99%	85% to <90%	<85%
■ 15-16 Q1 (9/3-11/6)	54%	40%	3%	3%
■ 15-16 Q2 (11/7-1/29)	31%	53%	9%	6%
■ 15-16 Q3 (1/30-4/8)	38%	51%	6%	5%
■ 15-16 Q4 (4/9-6/23)	40%	51%	5%	5%
■ 16-17 FALL (9/6-10/7)	74%	23%	2%	2%

High School - Student % Total Attendance - last 5 reporting periods



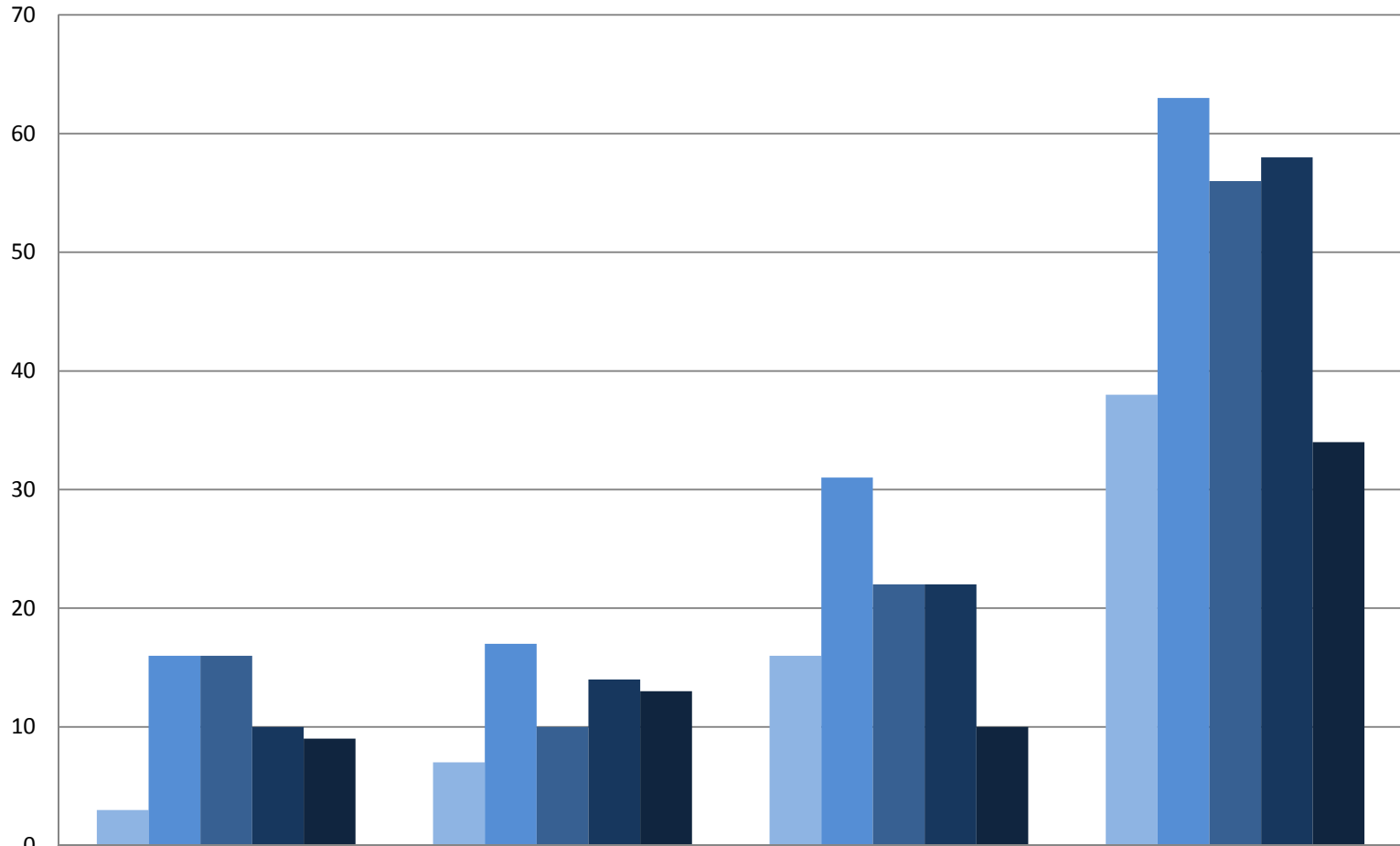
	Perfect Attendance	90%-99%	85% to <90%	<85%
15-16 Q1 (9/3-11/6)	49%	40%	5%	5%
15-16 Q2 (11/7-1/29)	31%	54%	6%	9%
15-16 Q3 (1/30-4/8)	32%	52%	7%	8%
15-16 Q4 (4/9-6/23)	36%	46%	9%	9%
16-17 FALL (9/6-10/7)	62%	29%	4%	5%

2016-17 Fall (1st 5 wks) - Student Percent Total Attendance - Buildings



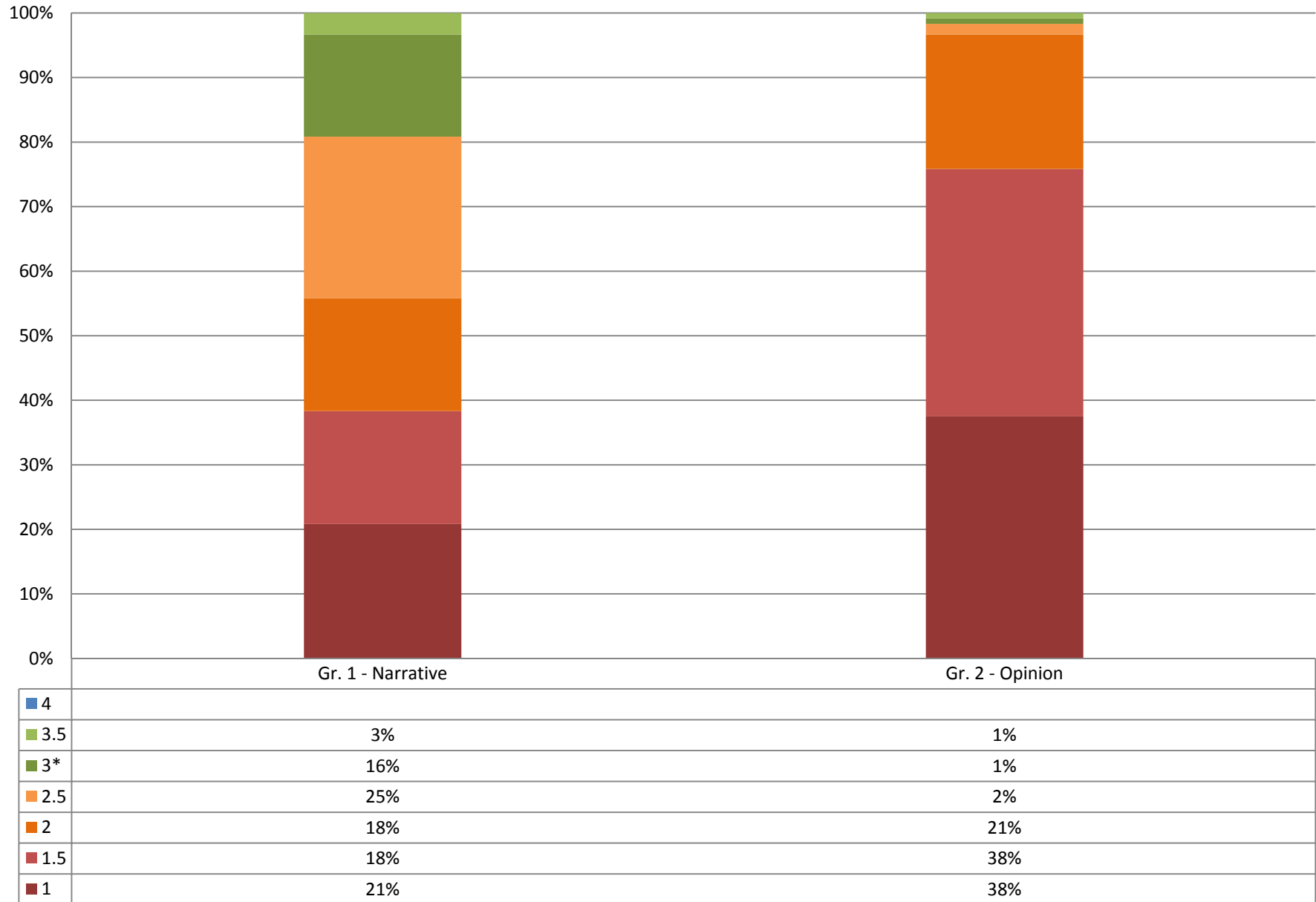
■ Perfect Attendance	67%	73%	74%	62%
■ 90%-99%	27%	23%	23%	29%
■ 85% to <90%	3%	1%	2%	4%
■ <85%	2%	3%	2%	5%

Attendance - Count of students whose % Total Attendance < 85%
Last 5 reporting periods



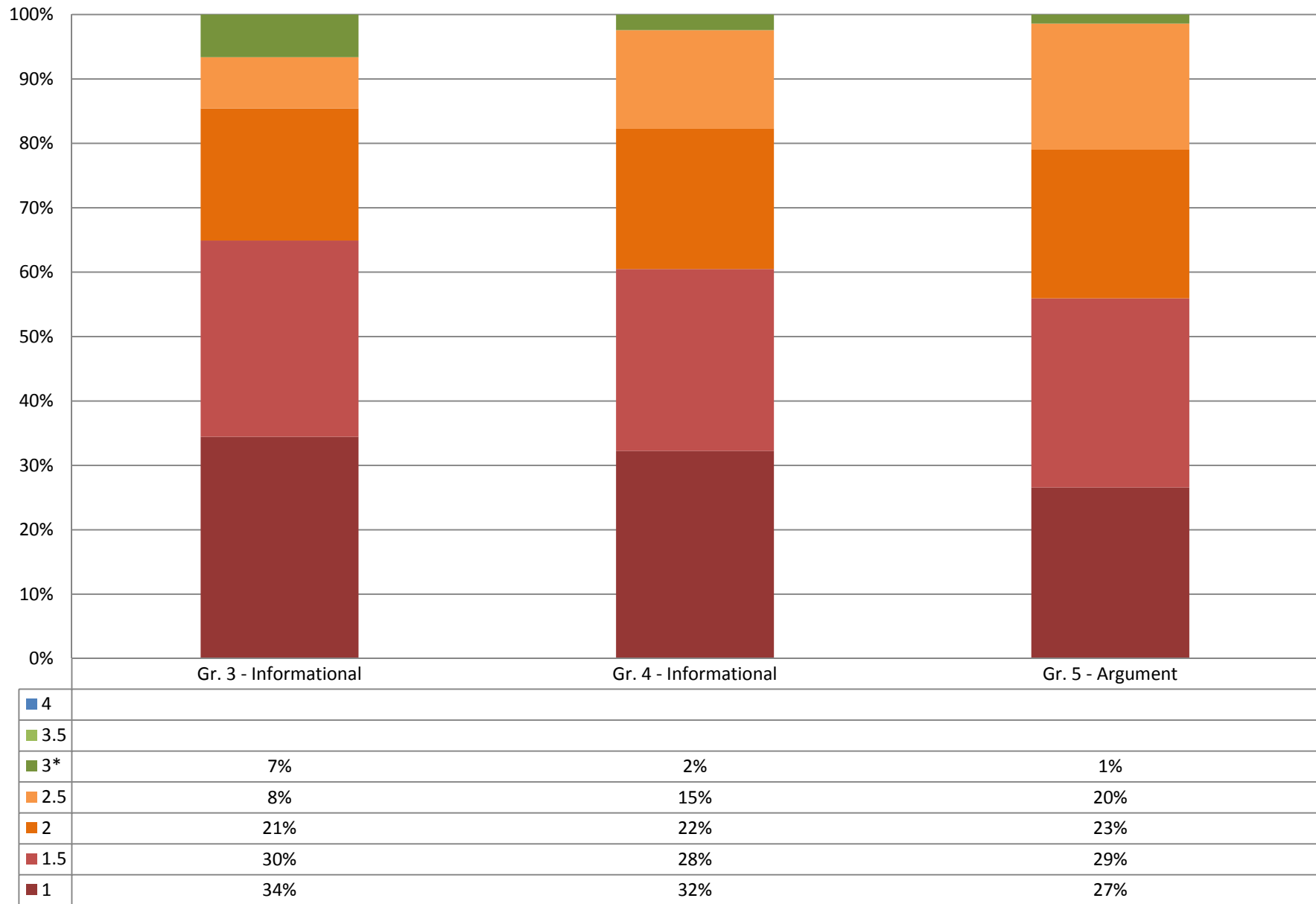
	EL	IN	JH	HS
15-16 Q1 (9/3-11/6)	3	7	16	38
15-16 Q2 (11/7-1/29)	16	17	31	63
15-16 Q3 (1/30-4/8)	16	10	22	56
15-16 Q4 (4/9-6/23)	10	14	22	58
16-17 FALL (9/6-10/7)	9	13	10	34

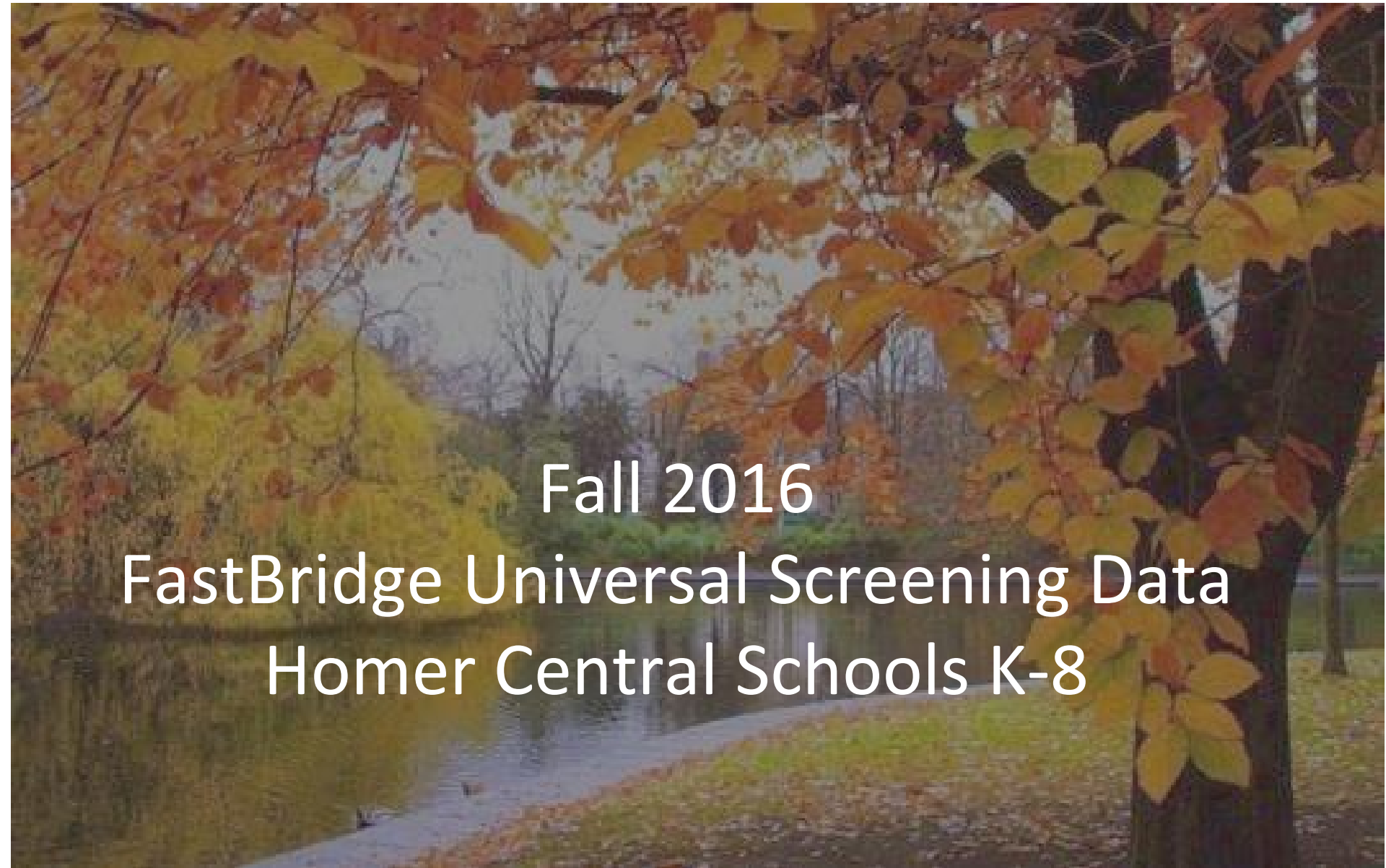
16-17 Fall - Writing Prompt - Elementary School Gr. 1-2



* Students are expected to earn a Level 3 (be "on grade level") by the end of the year.

16-17 Fall - Writing Prompt - Intermediate School Gr. 3-5





Fall 2016

FastBridge Universal Screening Data
Homer Central Schools K-8

School Level Data

Questions Addressed:

At a building level

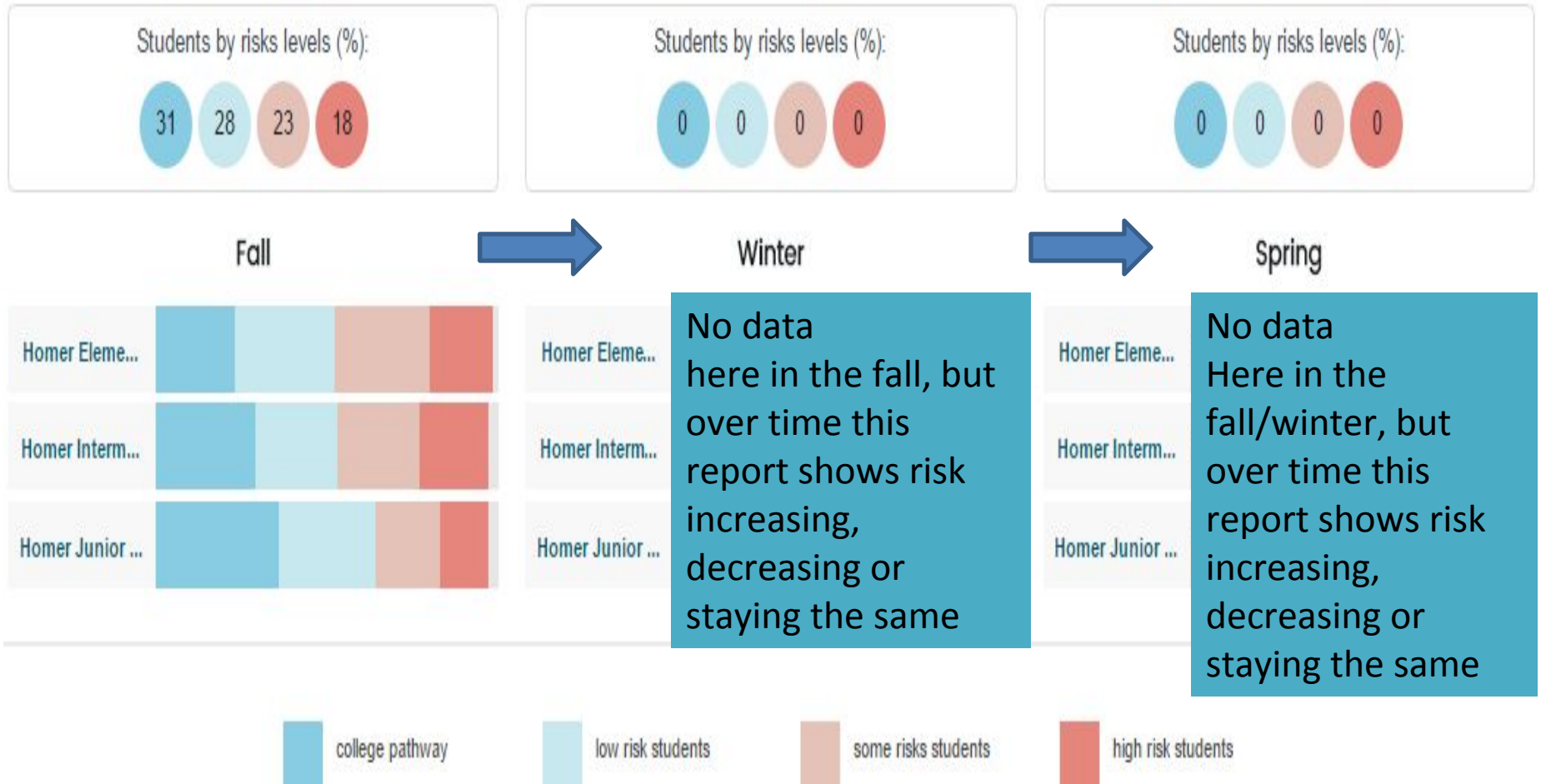
- How many students are at risk?
- Where are they? (Resource Allocation)
- Is risk increasing, reducing or staying the same over time? (Program Evaluation)

aReading (Adaptive on Computer) Grades 1-8

Questions Addressed: How many students are at risk? Where are they?

Is risk increasing, reducing or staying the same over time?

In an 'Average School': **15% High Risk**, **25% Some Risk**, **40% Low Risk**; **20% College Path**

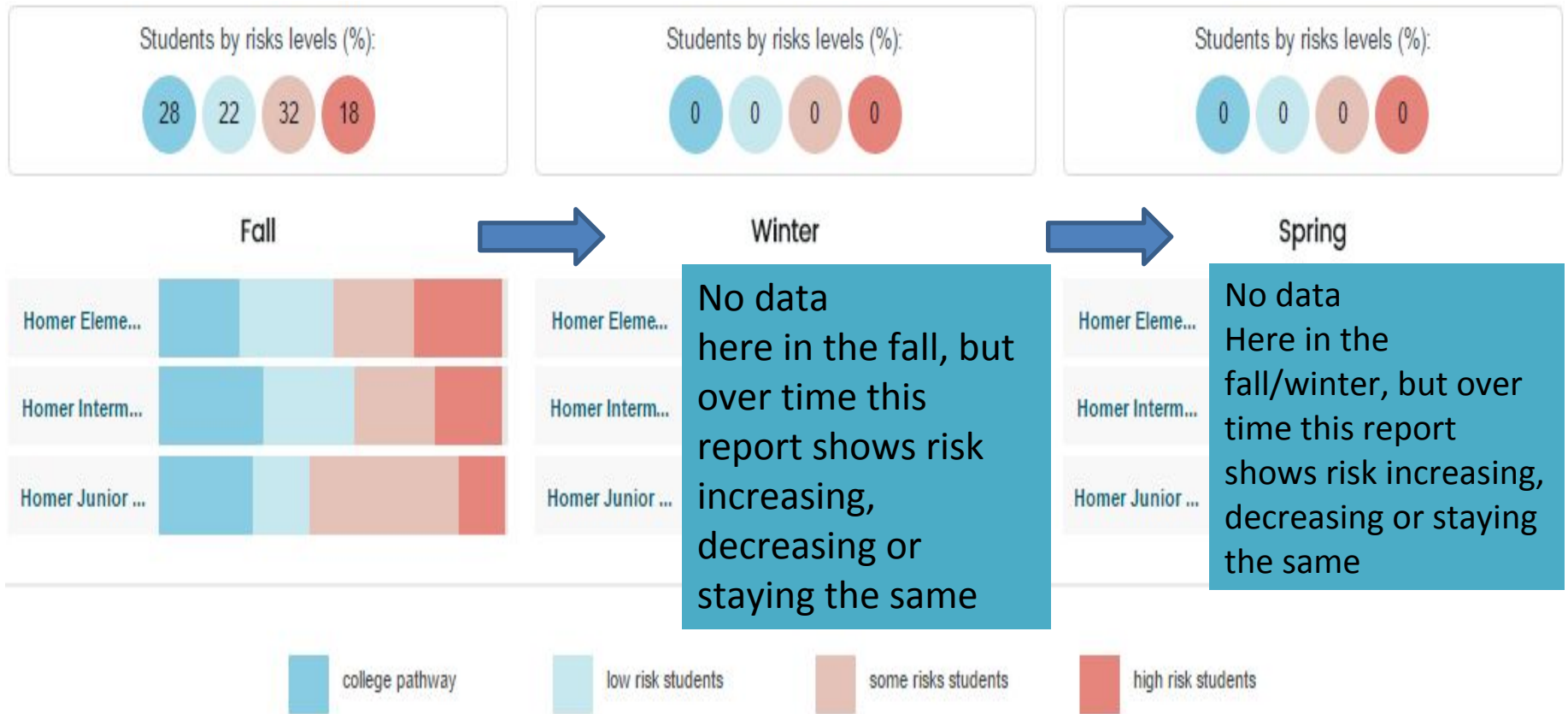


aMath (Adaptive on Computer) Grade 1-8

Questions Addressed: How many students are at risk? Where are they?

Is risk increasing, reducing or staying the same over time?

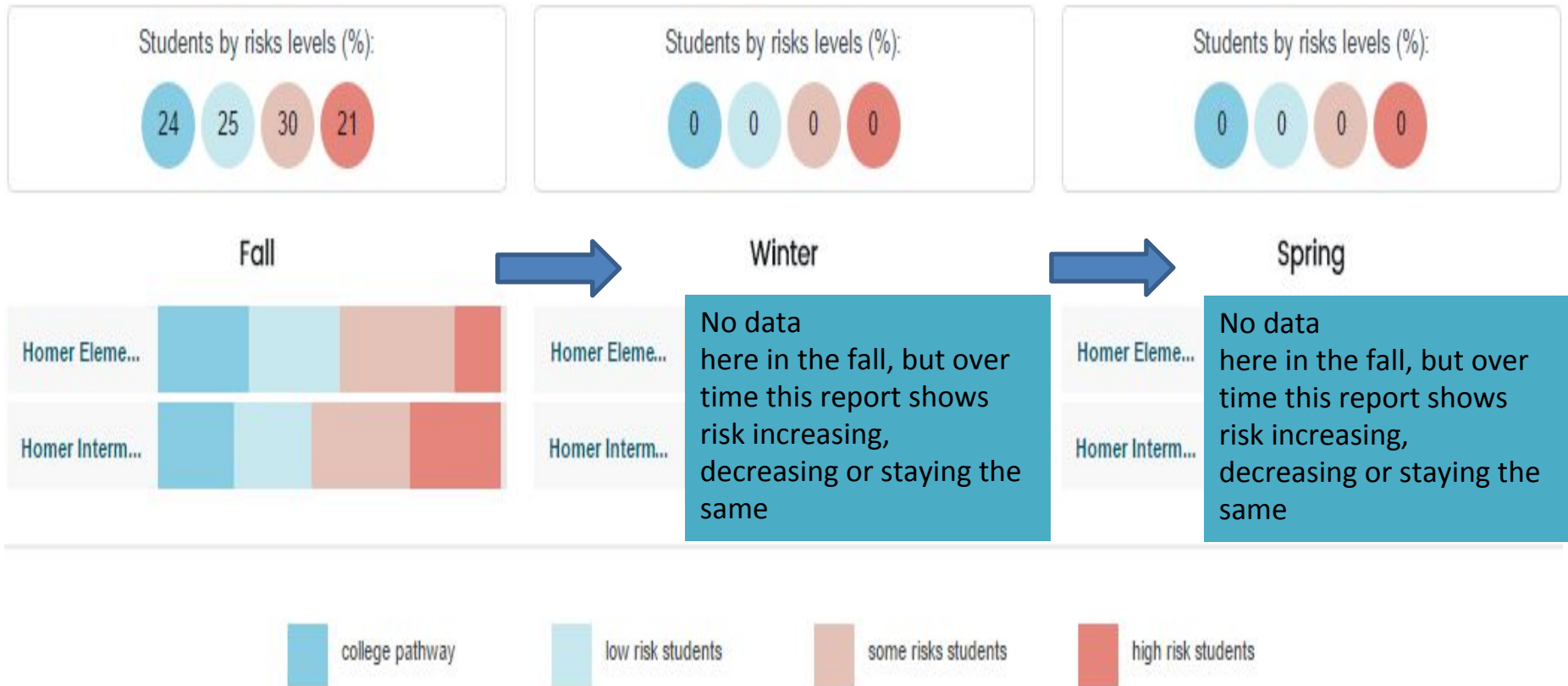
In an 'Average School': **15% High Risk**, **25% Some Risk**, **40% Low Risk**; **20% College Path**



CBMReading (1:1 assessment of reading automaticity) 2nd and 3rd Grade

Questions Addressed: How many students are at risk? Where are they?
Is risk increasing, reducing or staying the same over time?

In an 'Average School': **15% High Risk**, **25% Some Risk**, **40% Low Risk**; **20% College Path**

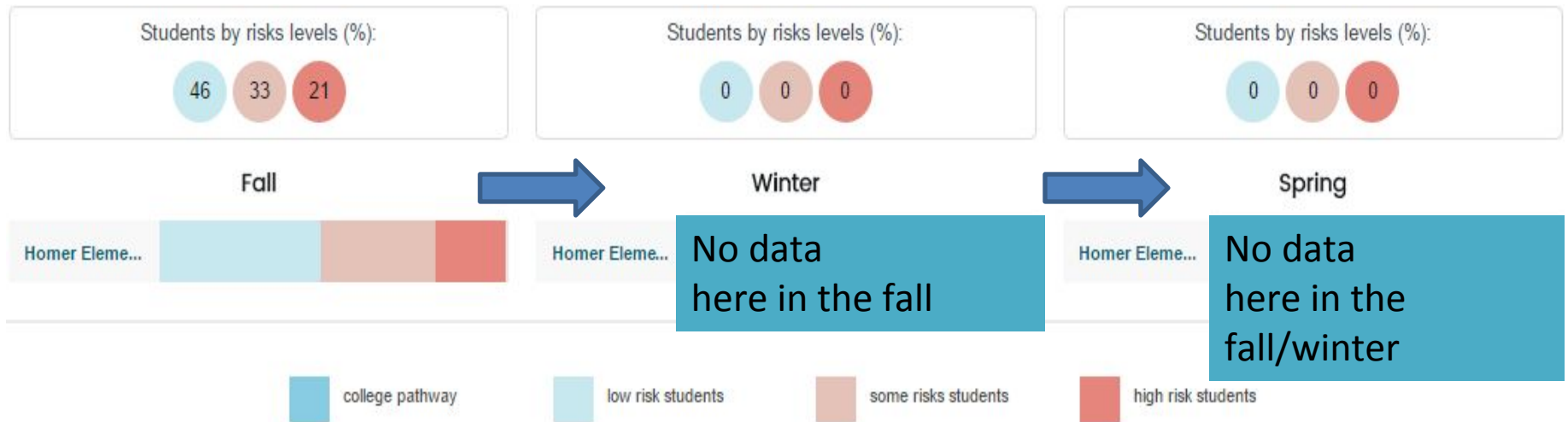


earlyReading K- 1st Grade

Questions Addressed: How many students are at risk? Where are they?

Is risk increasing, reducing or staying the same over time?

In an 'Average School': 15% High Risk, 25% Some Risk, 60% Low Risk



(1:1 assessment of phonics, phonemic awareness, sentence reading)

Grade Level Data

Questions Addressed:

At a grade level

- How many students are at risk?
- Where are they? (Resource Allocation)
- Is risk increasing, reducing or staying the same over time? (Program Evaluation)

*May help with decisions concerning
program evaluation and resource allocation*

Over time...

FastBridge will provide us with a norm-referenced, common assessment tool to screen, diagnose, monitor and inform instruction in K-12 reading and K-8 math.