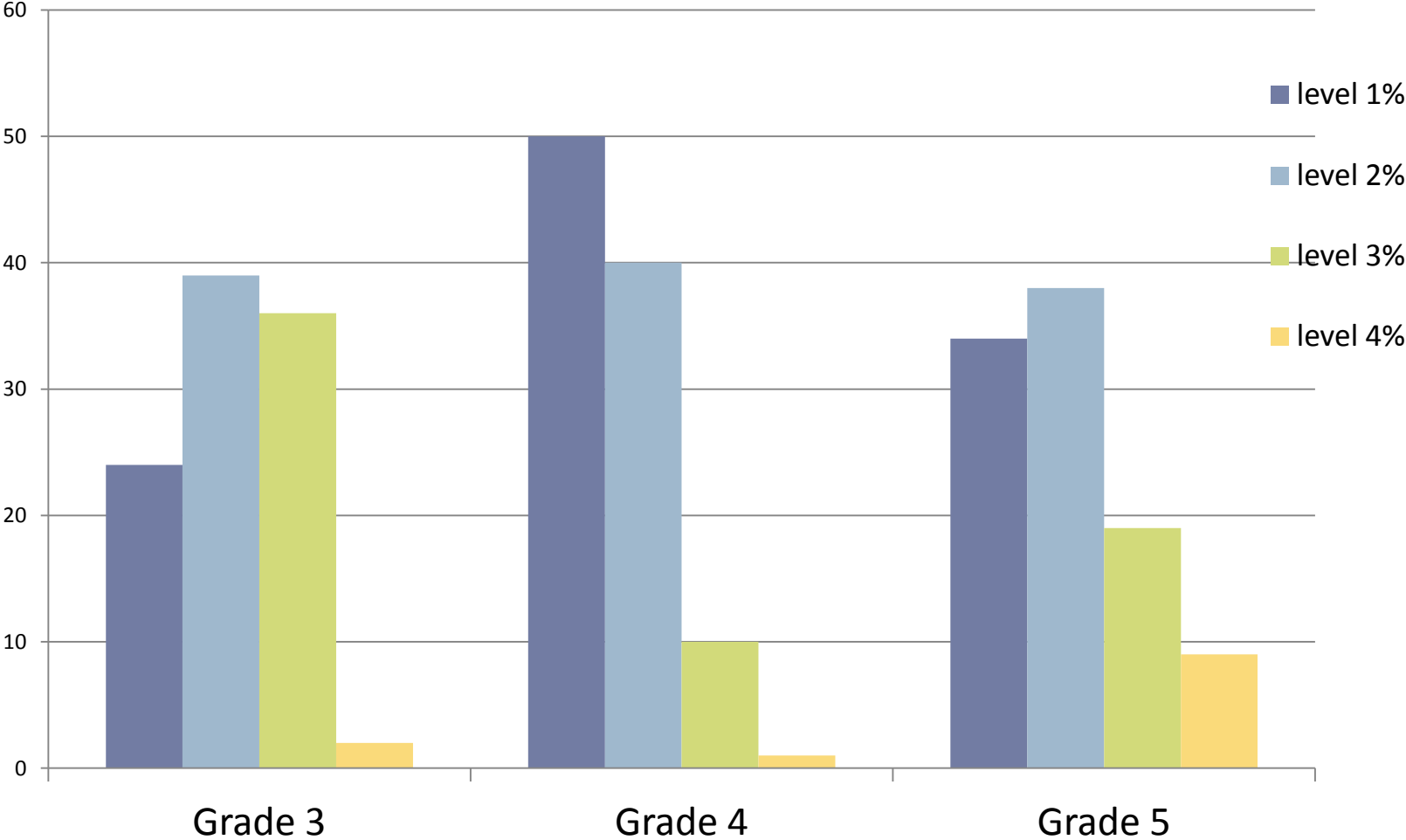


NYS 3-8 ELA and Math Assessments

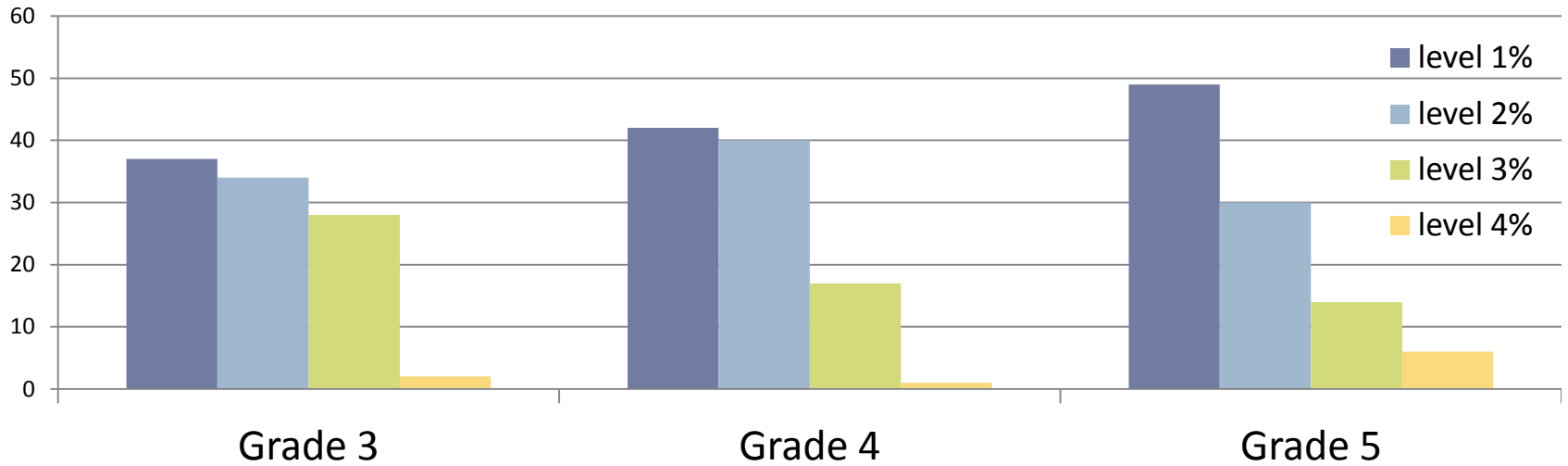
2016 Statewide Summary

- ELA scores for grades 3-8 overall raised 6.6 percentage points to 37.9
- Math scores for grades 3-8 overall raised one percentage point to 39.1
- NYS cannot pinpoint why scores raised due to the numerous changes in the assessment
- **Due to these changes the proficiency rates from 2015 to 2016 are not directly comparable**

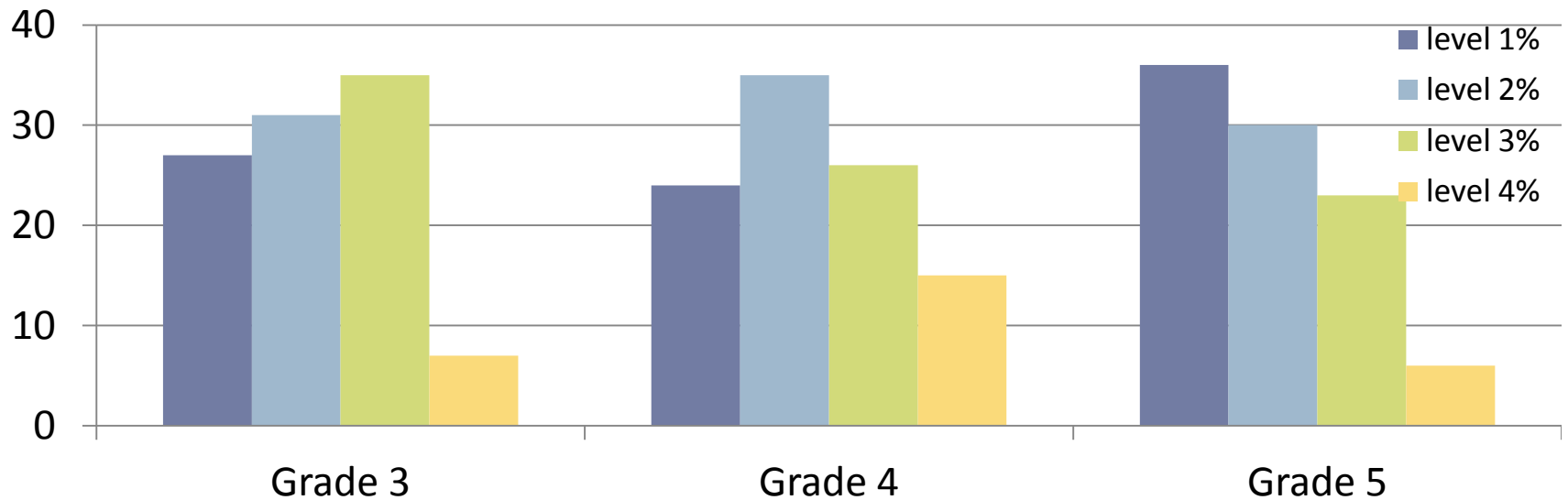
Intermediate ELA Percentages



Cortland County ELA Percentages



NYS ELA Percentages



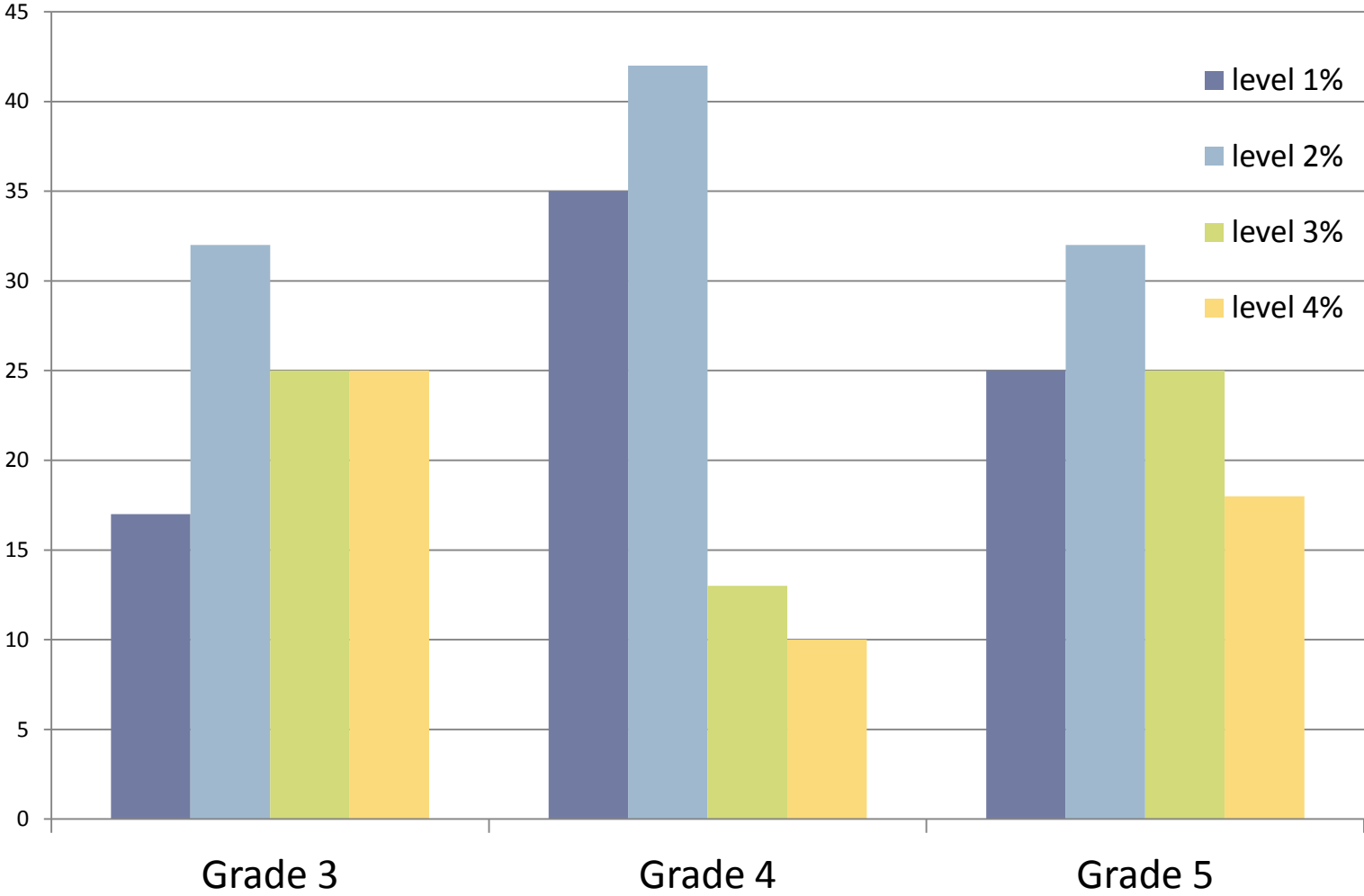
2015-2016 ELA Instructional Changes

- Implementation of Gibson model of differentiation across grade levels
- Modules were substituted (grades 3-4) and/or adapted (grade 3-5)
- Writing instruction and evaluation was aligned and better defined
- Addition of supplemental texts
- Expanded menu for interventions
- SUNY PDS school expanded staff development opportunities for all teachers and utilized MST students in seven Intermediate classrooms

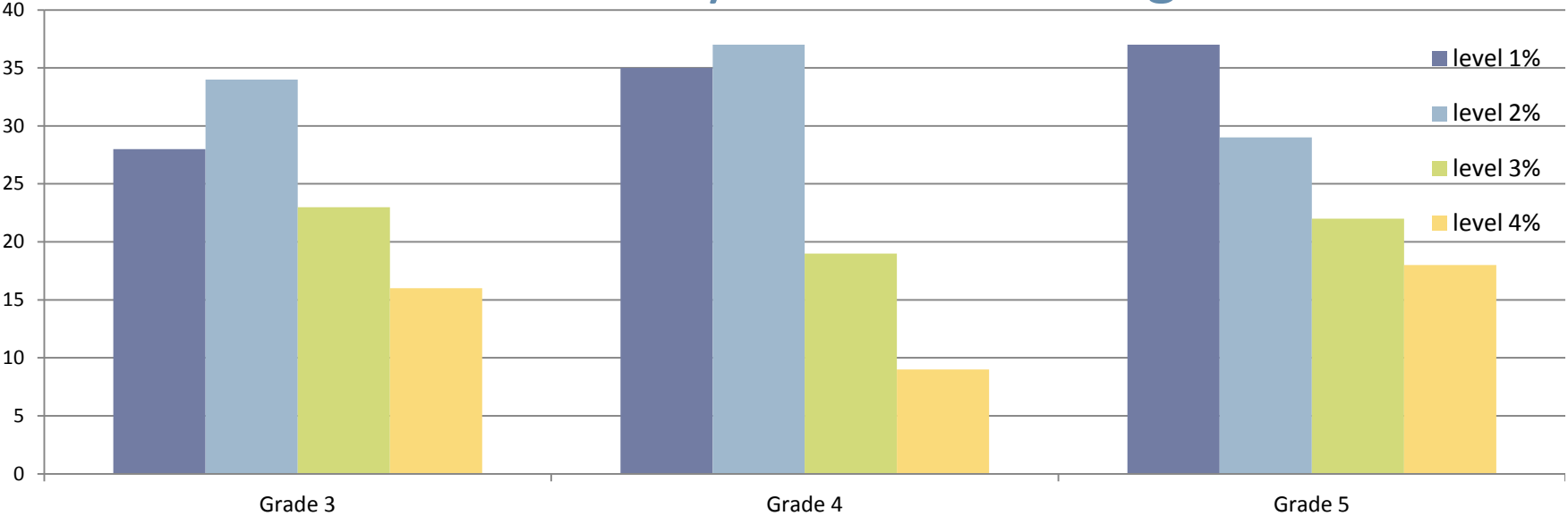
2016-2017 Int. ELA Instructional Focus

- Continue to use supplemental texts to increase access to materials
- Use of teacher and grade level data to improve instruction
- Continue with PD through SUNY Cortland and other opportunities
- Fully implement new writing instructional plan and evaluation
- Expansion of PALS (reading)- TA training and increased intervention groups
- Transition to Fast Bridge

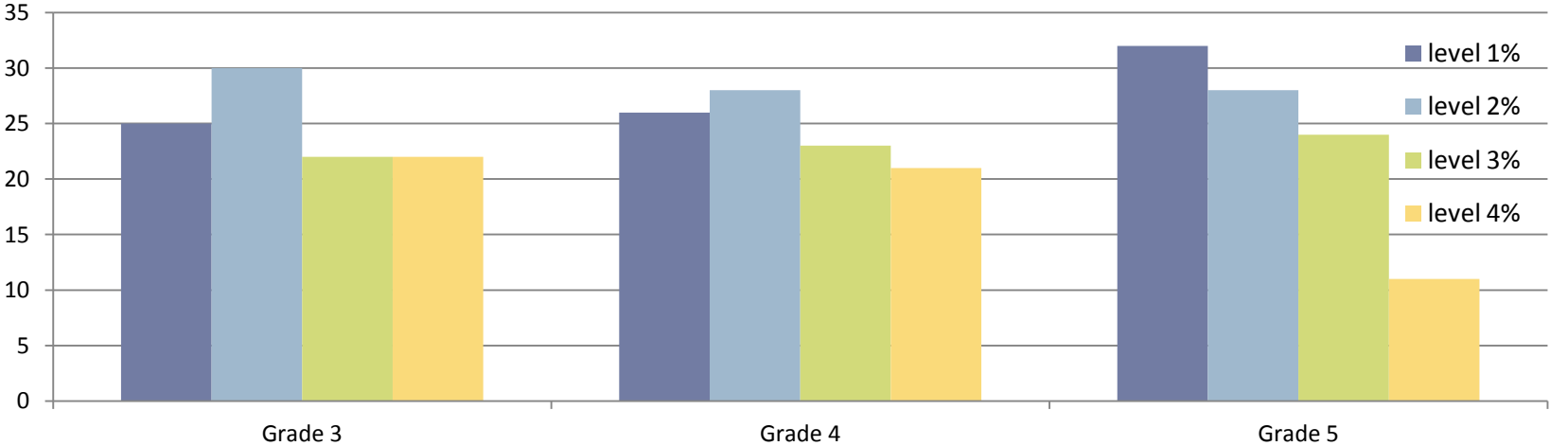
Intermediate Math Percentages



Cortland County Math Percentages



NYS Math Percentages



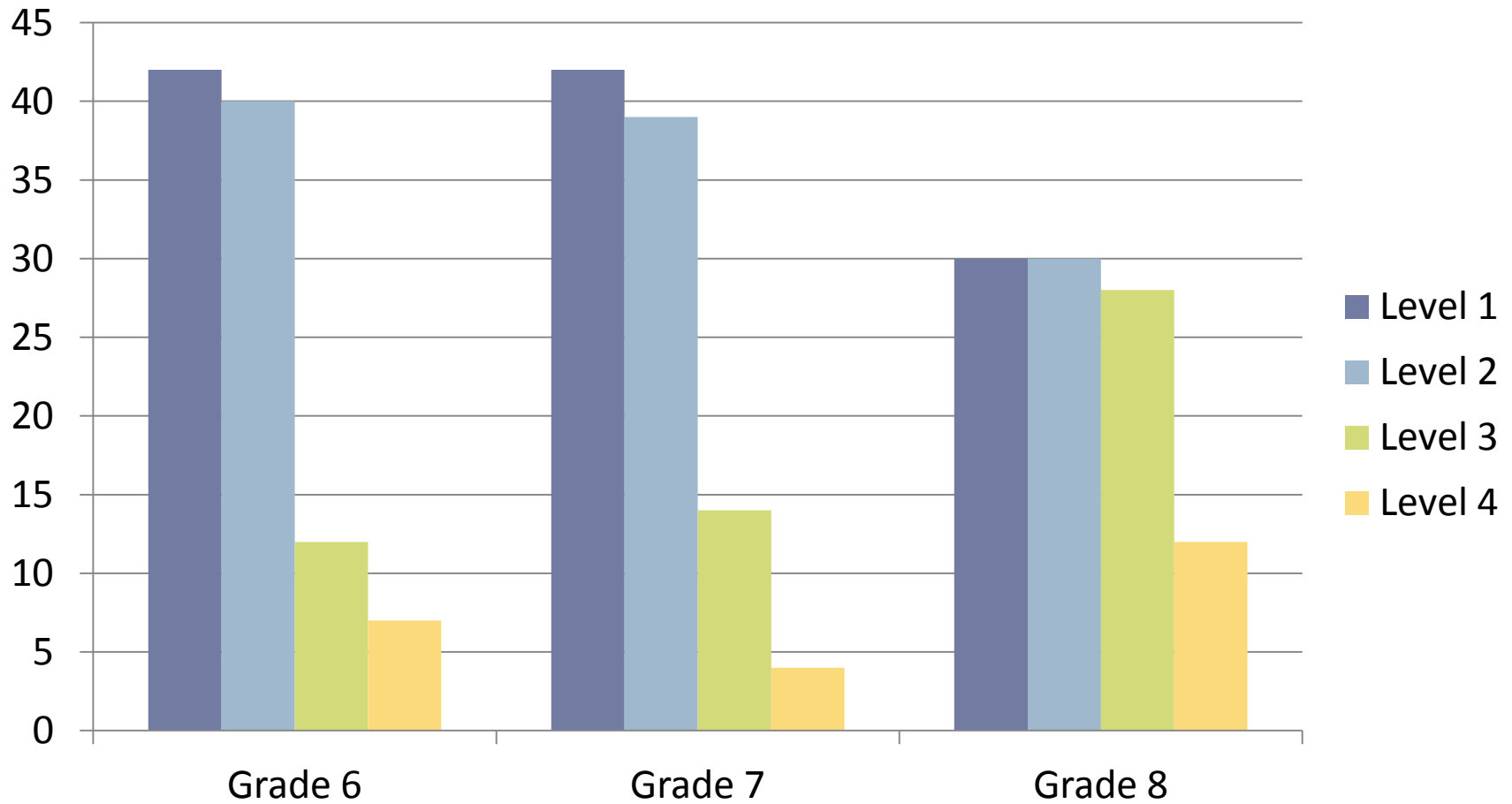
2015-2016 Math Instructional Changes

- Implementation of Gibson model of differentiation across grade levels
- SUNY PDS school expanded staff development opportunities for all teachers and utilized MST students in seven Intermediate classrooms
- PALS math pilot
- Expanded use of on-line programs for fluency and problem solving

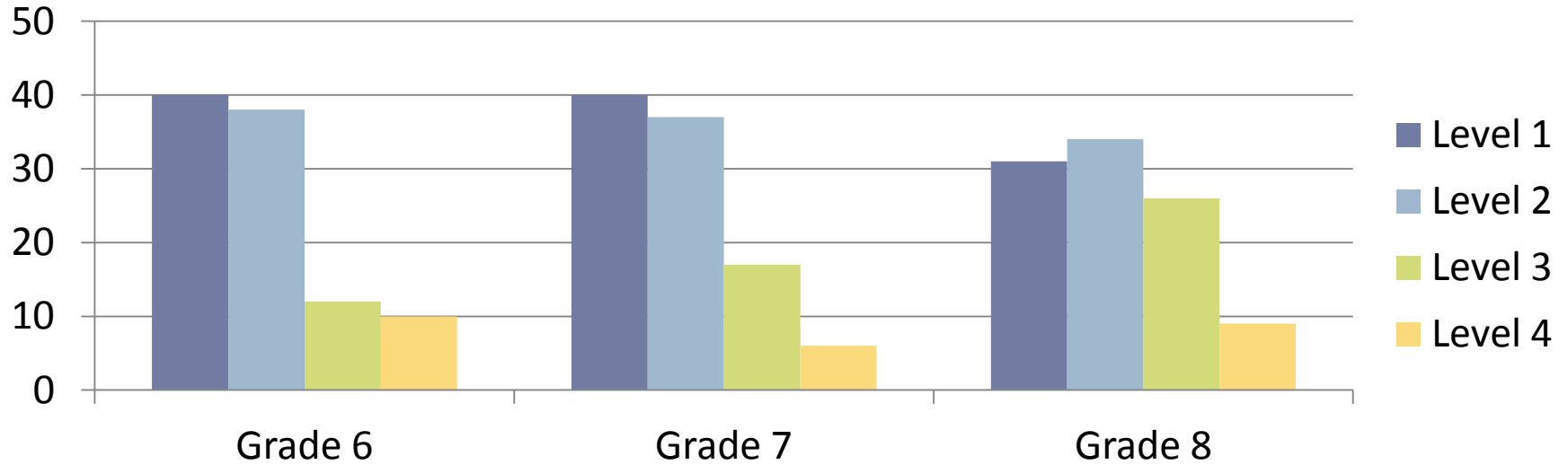
2016-2017 Int. Math Instructional Focus

- Continue to use supplemental materials
- Use of teacher and grade level data to improve instruction
- Continue with PD through SUNY Cortland and other opportunities
- Addition of K-3 AIS math teacher
- Transition to Fast Bridge

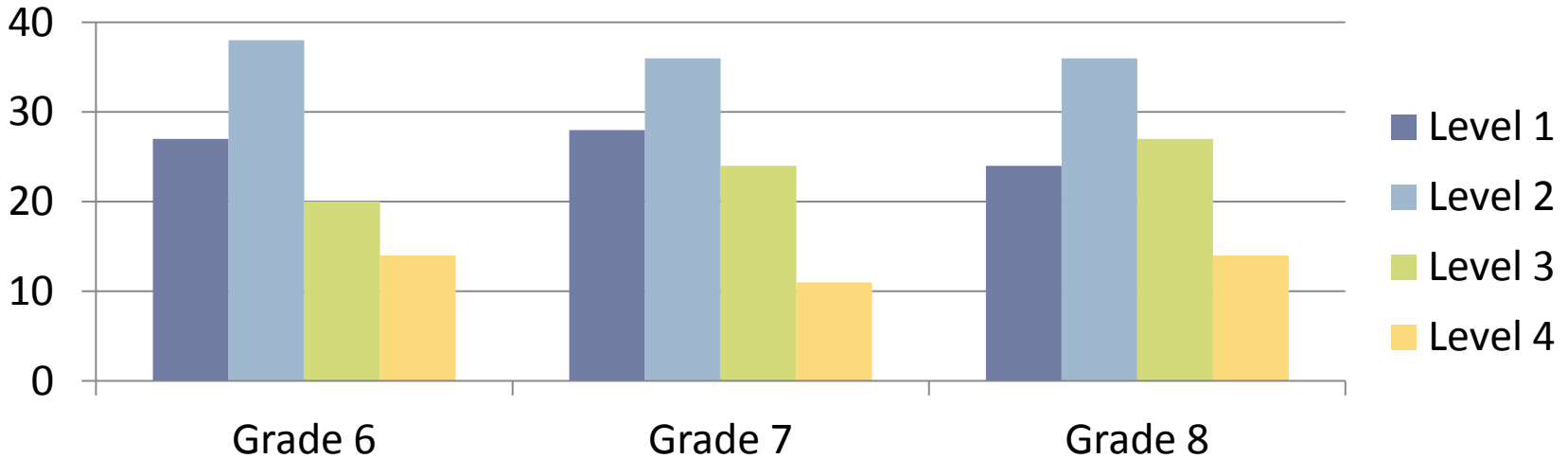
Junior High ELA Percentages



Cortland County ELA Percentages



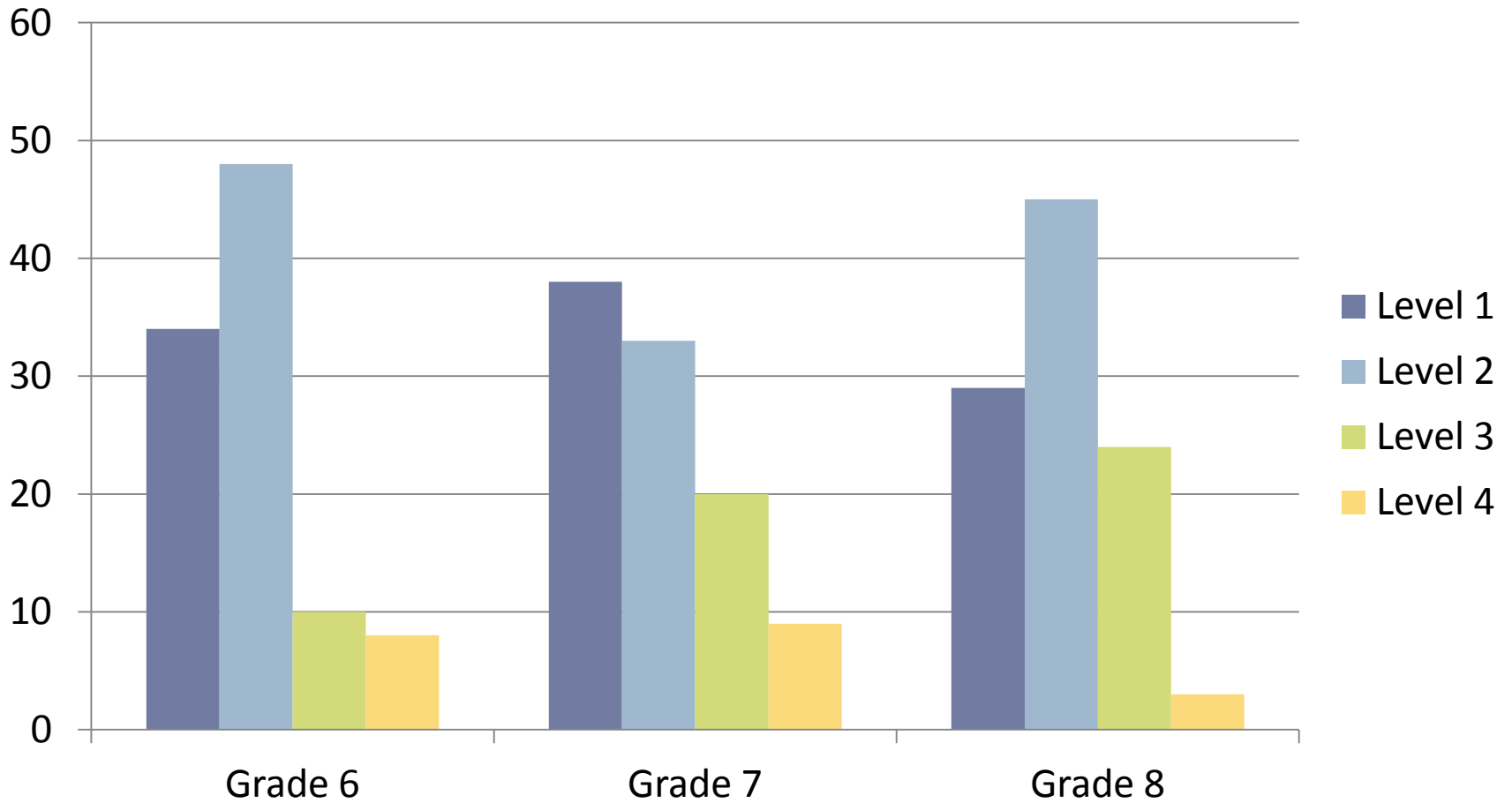
NYS ELA Percentages



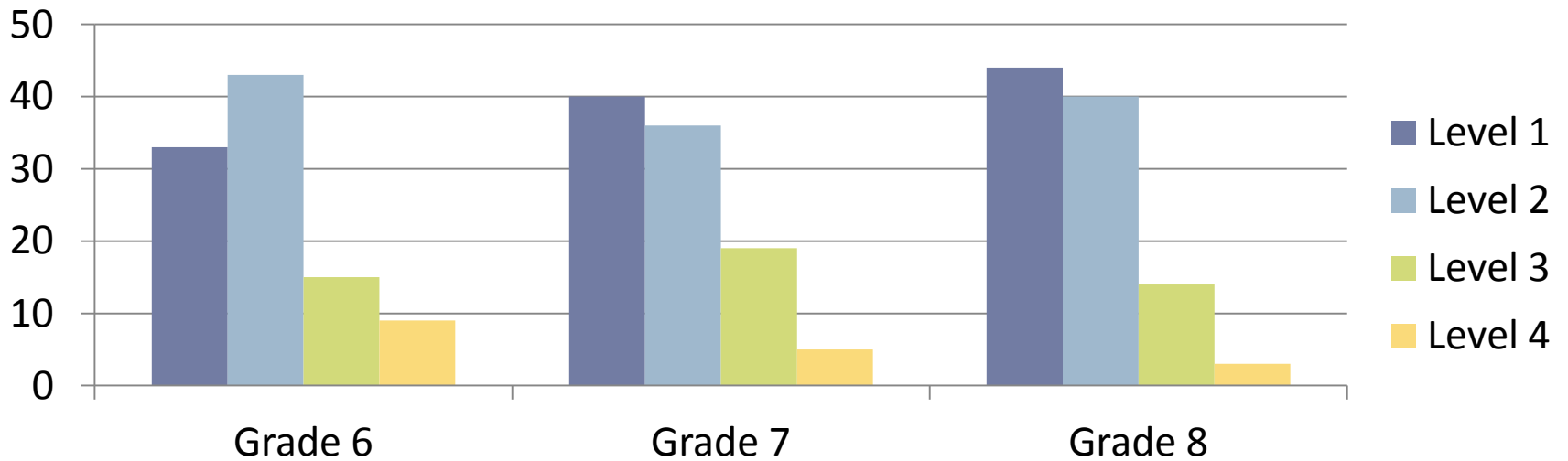
2016-17 JH ELA Instructional Focus

- ✓ Subject area days to be devoted to analyzing teacher and grade level data to pinpoint curricular gaps/areas of focus to improve instruction
- ✓ RTI block to be implemented at sixth grade
- ✓ Restructuring of Academic Intervention Services in grades 7 and 8 to include explicit reading support
- ✓ Transition to Fast Bridge

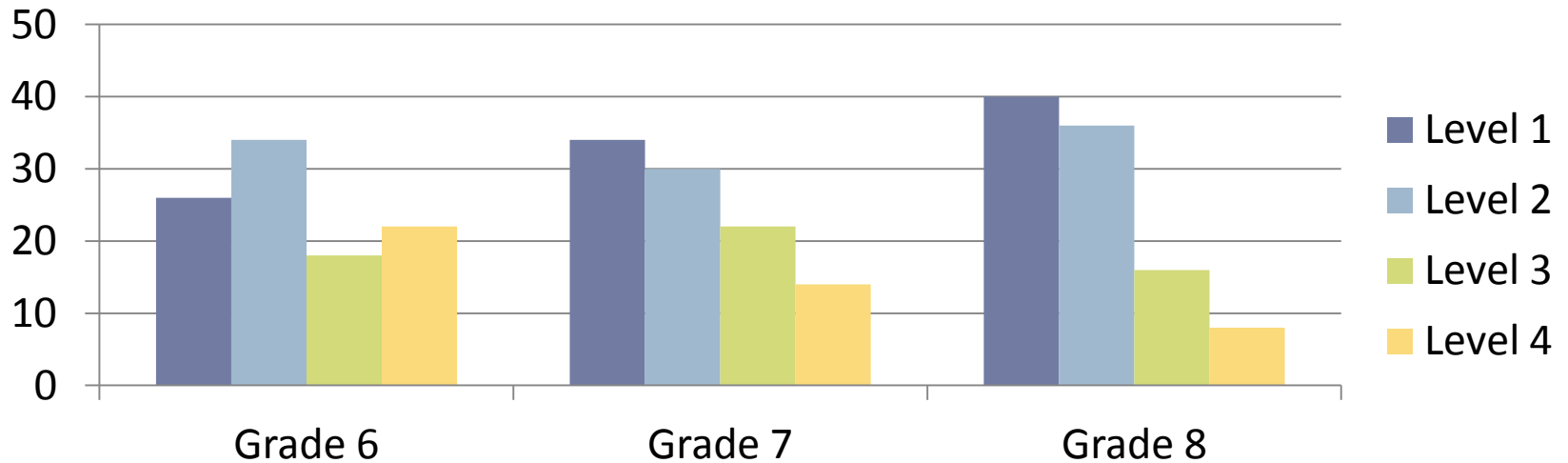
Junior High Math Percentages



Cortland County Math Percentages



NYS Math Percentages



2016-17 JH Math Instructional Focus

- ✓ Subject area days to be devoted to analyzing teacher and grade level data to pinpoint curricular gaps/areas of focus to improve instruction
- ✓ RTI block to be implemented at sixth grade
- ✓ Restructuring of Academic Intervention Services in grades 7 and 8 to include explicit math support
- ✓ Transition to Fast Bridge

Intermediate/Junior High Summary

- Proficiency levels are inconsistent through the grade levels and subject areas- also, when in comparison with State and County results
- We will continue to work to increase the rigor and weaker areas of instruction
- Data reports are prepared and meetings are scheduled- grade level chairs/subject area teams are currently working to help develop the planning